

62.71

LIBRARY
RECEIVED
MAR 2 - 1956
U. S. Department of Agriculture

TIMBERLAND
GARDENS
1956

Gardens located at Waterloo, Oregon.

Mailing Address:

*Rt. 1, Box W-50,
Lebanon, Oregon.*

George and Mirl Vauter

We have grown glads for 26 years and hybridized them for 24. The stock we sell is with few exceptions grown by us, properly cured and hand cleaned. While we cannot be responsible for the crop or for more than the price of the bulbs, we guarantee satisfaction every way possible and stand ready to right any mistake.

THE FOUNDATION OF BUSINESS SUCCESS IS SATISFIED CUSTOMERS.
We know of no other.

Our bulbs are never treated with dangerous substances. We could not use DDT even if we wished, due to Mirl's severe allergy. Our state inspector has instructed us as to satisfactory non-poisonous substitutes, so that our bulbs are quite healthy.

Orders of \$3.00 and over shipped prepaid. Terms cash, or we will hold for 25% deposit, balance before shipment. If order totals less than \$3.00, please include 35¢ for postage. We give bulb discounts as follows: for orders of \$3 to \$5, select 10% extra value; over \$5 to \$10, 15% extra; over \$10, 20% extra. No discount on Morningface, Queen Mab, Victoria Falls, Beaconette or Salmon Elf. If you will pay the postage on your order, we will send bulbs, our choice, to twice the amount at least, selected from late introductions. Mention this when sending the order. No discount on Blue Goddess or Oriental Splendor.

No single item for less than 25¢ except where listed. Order early to insure getting what you want. We grow few varieties in large quantities and some items on our list are always sold out early. We will fill orders while stock remains unplanted. May is our planting month.

VISITORS WELCOME. Our garden is located at the edge of Waterloo on the beautiful South Santiam River, a mile off Route 20, turn off at finger sign 5 miles southeast of Lebanon, Linn County, Oregon. Our telephone is Alpine 8-5126 on the Lebanon exchange.

-----*****-----

Because of George's coronary attack last summer we did not get to a single gladiolus show though we do have a blue ribbon on a seedling through the kindness of Mr. and Mrs. James Otto of Camas, Wash., who saw to it that our blooms reached the Portland society show. We plan to make up for it this year now that George is on the road to recovery.

-----*****-----

TEN GLAD COMMANDMENTS

- I. Thou shalt give thy glads full sun if possible; half a day at least.
- II. Thou shalt plant thy bulbs in good garden soil, placing large ones 6 in ches deep, 4 inches apart; small ones 4 inches deep and 2 inches apart; bulblets 2 inches apart and thisk as peas.
- III. Thou shalt prefer a fertilizer of well-rotted manure; commercial fertilizers thou shalt use with great care or not at all.
- IV. Thou shalt soak thy planting well every ten days.
- V. Thou shalt spray or dust after each soaking with approved materials not dangerous to health.
- VI. Thou shalt cultivate to keep down weeds and to keep roots wet with dust or other mulch.
- VII. Thou shalt rogue out every diseased plant. All these things do, remembering that thou suppliest them while God sends the sun and watches with thee in joy as their petals open.
- VIII. Thou shalt dig thy treasures four or more weeks after blooming; cut off plants at the bulb and dry quickly for several days.
- IX. Thou shalt discard old roots and last year's bulbs, saving the bulblets for increase.
- X. Thou shalt sprinkle thy beloveds with disinfectant flakes or dust not dangerous to thy health and store them in a cool dry place till springtime comes again.

We first published the above in 1954 and it has been reprinted at least once. It is the result of many customers' appeal to give them the rules for glad-growing in a nutshell.

OUR 1956 INTRODUCTIONS

MORNINGFACE

(143-Vawter) (Rosy Belle X (Loveliness X Red Tweedle)).

Not a faceup. Morningface, so named because it reminds us of the "shining morning face" we used to sing about in school, has four deep pink petals and two yellow ones, the lip petals being solid yellow. The tiny plain-petaled flower opens 5-6 of its 18 buds with another 6 in color, stands straight on wiry stems and cuts beautifully. Florets measure 2 1/2 in. Arranges in small dishes; ash-trays are ideal. Be used tips in an abalone shell as a shadow-box the shell being less than 8 inches high. Thus far it has not made very large bulbs though it is a fine propagator and an early bloomer. \$2.00, any size bulb, one bulb and 10 bulblets, \$4.00.

QUEEN MAB (266-Baker) Parentage unknown. If you have been looking for a good small lavender, here it is. Medium blue-lavender, solid color with only a few hairlines of deeper color over a hint of cream, in the throat. Queen Mab opens 8 waved florets 2-3/4 inches across in regular double row placement, fine facing; 17 buds with 6 in color. We have not grown this ourselves but have seen it in the seedling patch of our neighbor, Paul Baker, and were well satisfied with the healthy green foliage. Queen Mab is darker than Fairy, has no throat blotch as do most other small lavenders, and will establish a record for itself when it gets to the shows. We are enthusiastic about this fine variety; there is nothing else like it in its color and size. Midseason flowering; propagation average. \$2.00 each, any size bulb; one bulb and ten bulblets for \$5.00.

VICTORIA FALLS (271-De Bruyn) Bright fuchsia with large white throat. Opens 5 3-inch florets on a wiry spike of 15 buds with 4-5 more in color, and every bulb will produce from 2-5 of these, making it ideal for rock garden planting as it stands only about 32 inches in the field. In fact, this variety is the fore-runner of a new race of small glads eminently suited to rock gardens though useful for other purposes as well. We have already embarked on an extensive breeding program with this, in conjunction with the De Bruyn firm of Noordwijk. Fast propagator. L or M, \$1 each; 1 bulb and 10 bt. \$2.00.

-----****-----

The following varieties, originated by Paul Baker, were introduced last year but received little publicity. We now have control of both and are proud to offer them to the public.

BEACONETTE (237) Listed last year as 336, we have handled a good many spikes and found no florets measuring over 3 1/4 inches; Mr. Baker joins us in reclassifying it as above. Beaconette is lightly ruffled brilliant scarlet with large yellow blotches. Field height 45 inches, flowerhead 20 in; 18 buds, 7 open and 10 in color. Foliage is dark blue-green, the finest we ever saw glads growing on. It is a fine propagator, says Mr. Baker, and is already a popular commercial in spite of its size, as attested by a local florist who buys all Mr. Baker can supply. You will grow Beaconette eventually; better start now. Nothing else in its class can touch it. L- \$2.00; M- \$1.50; S- \$1.00; bt.- 10/\$.00; 100/\$16.00.

SALMON ELF (130) The only glad in this class; not a faceup but a darling baby replica of large ruffled glads. Color is salmon, blending to a golden center. Salmon Elf opens 7 tiny 2-inch round flor-

ets with 5 in color of 18 buds. Flowerheads are 19 inches, field hgt. 37 inches. Stem is slender though not wiry. Facing is generally good though there is a slight tendency to show a bit of stem, its only fault. However we had only a few do this in all our long row. Ideal for wee arrangements, corsages, and will win the blue ribbons when we can get it to shows. Most garden visitors commented "How sweet!" Fine propagator. L- 50; M- 35; S- 25; bt. 10/50; 100/\$4.00.

We offer three varieties from Holland and can recommend them highly after growing them last summer.

BLUE GODDESS (479-Pfizer) Latest and best Pfizer blue, medium-dark in hue with deeper throat mark. It bloomed from bulblets with 7 open florets. Color is clear and fresh. M- \$5.00; bt. 1/\$1.00. Net.

ORIENTAL SPLENDOR (590-De Bruyn) Plain petalled very large rich solid red-brown, evenly veined yellow; early flowering. It opens 6-7 florets on a tall straight spike of 18 buds with 6 in color; propagation only fair. Every spike was begged for before it bloomed; we had them promised one to a person! We never saw so popular a variety. Whatever your expectations, Oriental Splendor will exceed them. Opens well when cut in bud. Large only, at \$3.00 each, net.

PRINCESS BEATRIX (425-De Bruyn) Lightly ruffled brilliant red-orange with a small red-brown throat mark. Though we had a great many, they went as fast as they showed color; this was the favorite glad at a flower show judges' school where several of them were taken. Propagation good. The only fault we could find was a tendency to fade after several hours in hot sun after opening, but its more-than-usual beauty offsets this. Named for Holland's crown princess, it opens 6-7 beautiful florets with 6 in color, 17 buds. L- 50; M- 35; bt.- 10/50; 100/\$4.00.

Gladiolus is among the few flowers that have a wide range of both color and size; that exist in a variety of forms. Glads come in every hue of the rainbow and many not included therein; they are ruffled, plain, rolled, as to petal; round, triangular or almost square as to floret form; They come from tiny "Exquisite Midget" to huge "Paul Bunyan" in size; so there is a glad for every purpose: house decoration, personal ornament, church and large hall arrangements.

SPECIAL MINIATURE COLLECTION OFFERS

We are sure many of you will wish to try these small beauties so are offering the following collections to enable you to do this:

JEWEL BOX COLLECTION 1.

Morningface,	1 blooming size bulb	\$2.00	
Queen Mab,	1 blooming size bulb	2.00	\$7.00 value for \$5.00.
Beaconette,	1 large size bulb	2.00	
Salmon Elf,	2 large size bulbs	1.00	

JEWEL BOX COLLECTION 2.

Morningface,	1 bloom size bulb, 10 bt.	\$4.00	\$15.00 value for
Queen Mab,	1 bloom size bulb, 10 bt.	5.00	\$10.00
Beaconette,	1 large bulb 10 bt.	4.00	plus 10 free bt.
Salmon Elf,	2 large bulbs, 20 bt.	2.00	Victoria Falls.

JEWEL BOX COLLECTION 3

Morningface,	1 bloom size bulb, 40 bt.	\$10.00	\$36.00 value for
Queen Mab,	1 bloom size bulb, 30 bt.	11.00	\$21.50,
Beaconette,	1 large size bulb, 40 bt.	10.00	plus 30 free bt.
Salmon Elf,	2 large size bulbs, 100 bt.	5.00	Victoria Falls.

100 AND 200 SIZES

Prices unless noted, 2 L/25; 3 M/25; 5 S/25; bt.- 25¢ pkg.

ALL BLOTCHES (161-Van Voorhis) Tiny rosepink, large rosepurple blotches, open placement. L- 25; M- 3/30; S- 3/30; bt.- 10/25.

ATHENA (366-Koerner) Lacinated rose-orchid, gold-lined throat.

The petalpoints extend over 3½ inches; like orchids.

ATOM (236-Hedgecock) Scarlet velvet, all petals edged cream. Opens 4 with 4 in color. No large.

BABS (210-Pruitt) Formal ruffled light yellow, no markings. A champion every year and stands high in the NAGC symposium.

BABY DOLL (290-Bray) Flesh pink blending to greenish cream throat.

Quite ruffled and lovely but not AOC to us. Opens 6.

BEACONETTE (237-Baker) See page 4 for description and prices.

BEAUTY BABY (106-Labrum) Lightly ruffled creamy white, lavender cast. Six tiny florets open. A fine parent for 100's.

BETTY BLUSHES (240-Deming) Ruffled pink, hooded, quite informal.

Liked for corsages and arranging.

- BO PEEP (231-Butt) Heavily ruffled buff-pink, cream throat. Opens 5-6 with 6 in color.
- BRAZILIAN BUTTERFLY (267-?) Light lavender; purple blotch on yellow throat. Slow increaser. Large only, 35.
- BRIGHT EYES (110-Koerner) Pale yellow faceup, bright red center. Very tiny, opens 5.
- CHINA DOLL (106-Koerner) Lacinated creamy pink, red throat darts. A dainty thing, not a faceup.
- DAINTINESS (200-Butt) Heavily ruffled milk white, no foreign color. Opens 7, 6 in color. M- 35; S- 25.
- DIXIE BELLE (222-Lins) Bright sparkling orange, much-ruffled. Has a yellow splash in the throat, 6 open in formal order.
- FADDIST (243-Brown) Light pink; red midribs on 5 petals form a star in the throat. Opens 5.
- FAIRY (266-Kuhn) Delicate unmarked lavender. Have seen it with 10 open on a long spike; fine little glad.
- FLICKER (221-Kuhn) Flashy little orange with red blotch on yellow throat. Tops its class in NAGC symposium.
- GAILY CLAD (211-Hardy) Heavily ruffled greenish yellow with orange scarlet blotches. Perfect for corsages, a honey for arranging. Opens 5, 5 in color. L- 30; M- 20; bt.- 15/25; 100/\$1.25.
- GNOME (110-Stancer) Wee greenish yellow, plain petals, solid color. Opens 6 with 4 in color.
- GOLDETTE (210-Butt) Ruffled light yellow, no markings. Opens 6, 5 in color. L- \$1.50; M- \$1.00; S- 60; bt. 10/\$1.00.
- HONEYDEW (216-Brown) Lacinated solid honey buff, 4 open. The only one yet in this color.
- ISLAND ORCHID (267-Kress) Lacinated smoky violet with dark violet feathers on cream throat. Long, narrow petals; looks like orchids. Make it up with silver gray ribbon. L- 25; M- 20; S- 2/30.
- ITO (120-Brown) Tiny light orange with golden throat. Large bulbs only.
- JINGLES (230-Lins) Ruffled rich salmon, pointed petals, cream throat. Opens 7 with 6 in color. L- 2/30; M- 2/20.
- KEEPIE (150-Brown) Tiny bright red with cream edges, 4 open. Good parent for 100 size glads.
- LADY BUG (250-Stancer) Lightly frilled salmon red with large cream throat. Almost a 150, but usually 2-3/4 in.
- LAORA (220-Van Voorhis) Solid golden orange, 6 open, 6 in color. This is our favorite small orange; we never have enough.
- LITTLE DOLL (207-Pfitzer) Cream-white with blue blotch bordered yellow, a new one from Europe; 5 open. Unusual. L- 60; M- 40.

- LITTLE GOLD** (220-Fischer) Deep orange-yellow, a bit ruffled 5 open. No large bulbs.
- LITTLE PAL** (261-Van Voorhis) This still hasn't been equalled: clear rose pink with rosered blotch and ribs over cream throat. A fine performer, at the top in NAGC symposium.
- LORNA MACKINNON** (233-Bray) Ruffled salmon with dark spear, 6 open. We've won some ribbons with this.
- LOVELINESS** (140-Koerner) To us, white suffused and edged pink. Lacinated, very small and a good parent for 100 size.
- LUCILLE** (207-Brown) Best of the creams, it has a large red blotch and plain petals, opens 6-7. L- 25; M- 2/30; S- 3/30; bt.- 10/25.
- MA PETITE** (222-De Bruyn) Rich orange, small golden throat mark; 5 open. Fast propagator. L- 25; M- 20; S- 2/30; bt.- 15/25.
- MARIONETTE** (213-Butt) Ruffled chartreuse yellow edged salmon and blotched deep red; 7 open. L- 25; M- 2/30; S- 3/30; Bt.- 15/25.
- MORNINGFACE** (143-Vawter) See page 3, new introductions.
- MULTIPETAL** (241-Koerner) White blushed pink, some red in center of this double faceup, parent of many new doubles. Opens 4-5 of 12 buds. N • L; M- 20; S- 2/30; bt.- 10/25.
- OCEAN SPRAY** (206-Baerman) Informal creamy white, amber blotch in throat, open placement, opens 5.
- ORANGE BUTTERFLY** (222-Salbach) Opens up to 10 bright orange florets with a few red lines in the throat. Third in NAGC symposium.
- ORANGE DELIGHT** (222-Kunderd) Two-tone marbled orange, lacinated and with velvet appearance; opens 4.
- OSAGE** (236-Brown) Light red to us, there's little yellow in it. Opens 5-6 in perfect placement; Second in this class.
- PARMA VIOLET** (279-Vawter) We must withdraw this little flower, leader in its color class, for increase this year. We have never had any trouble growing its big bulblets, but demand so far exceeds supply that we must regretfully take it out for a year. Everybody sends to us as the originator; we hope there will be plenty in 1957.
- PATTY BERG** (162-Koerner) Deep rose suffused and edged white; occasionally exceeds 2½ in. as do most 100's at times. No large bulbs.
- PELLETIER D'OISY** (290-Lemoine) Deep chartreuse edged with orange-scarlet; blotch of same color. Seven open, 6 in color. Never have enough. L- 50; M- 35.
- PICCOLO** (101-Koerner) Milk-white, purple darts in throat. Faceup, opens 4.
- PINKIE DOT** (141-Koerner) Another faceup, pink with large cream center. Very tiny, opens 5. Universally admired and most useful.

- PIROUETTE (232-Butt) Deep salmon with red-peppered yellow throat. Heavily ruffled, 6 open; very attractive.
- QUEEN MAB (266-Baker) See page 4, new introductions.
- RED BUTTON (150-Koerner) Very small red faceup, no markings, 4-5 open. Truly a red button; fine for small arrangements.
- ROSEMAID (262-Brown) Clear rose pink, fuchsia-rose blotches, opens 4-5; a fine little flower.
- ROSETTE (260-Kuhn) I'll never forget my thrill on first seeing Rosette, with its 8 open small florets of ruffled light rose with a deep rose feather. Stem a bit thick but this never shows when the spikes are made up. Second for show in NAGC symposium.
- RUBY (252-Kuhn) Solid plain red, throat a bit darker. Opens 5; tops the arrangement division in its color.
- SALMON ELF (130-Baker) See page 4 for description and prices.
- SILVERSIDES (262-Kuhn) Bright deep rose shaded silver, petalbacks silver, shaded rose. Truly unique. 6-7 open of 17 buds.
- SKALAWAG (242-Butt) Heavily ruffled deep pink with gold throat peppered pink. One of the best for any purple; 6 open. L- 50; M- 35; bt.- 10/35.
- SNOW BABY (200-Stancer) Pure white with touch of cream in the throat. Opens 6-7; consistently good.
- SON O' PAL (263-Van Voorhis) Light rose with crimson throat bordered yellow. Ours all flecked rosered. Nice. L/25; M/20; S-2/30;
- SPUNKY (286-Fairchild) Smooth brown-rose edged cream, opens 5; throat deeper, velvety appearance. L- 20; M- 2/30; S- 3/30; bt.- 100/\$1.
- STATUETTE (213-Butt) Ruffled light yellow, small throat mark of suffused fuchsia. Long spikes, up to 10 open.
- SUB DEB (200-Evans) Dainty small white, almost a 100 size. Plain petals, 5 open.
- TAURUS (270-Kunderd) Bright purple, throat somewhat deeper. At the top for any purpose.
- THOS. E. WILSON (145-Koerner) Deep pink with large primrose center. Very tiny faceup, opens 5.
- TONY BOY (263-Kunderd) Laciniated deep rose, clean white throat. Striking both in color contrast and unusual form. Opens 6-7. L- 50; M- 35; S- 25; bt.- 10/40.
- TRIM (266-Fischer) Ruffled medium lavender, clean white throat. Ours grew 45 inches tall and opened 8 with 7 in color of 20 buds; 20-inch flowerhead. We'd like to see any performance beat that! Good increaser too. L- \$1.00; M- out; S- 50; bt. 10/\$1.00.

VICTORIA FALLS (271-De Bruyn) See page 4, new introductions, for description and price.

VIVID (236-Cave) Vivid light scarlet, no markings; a color gem with 4-5 open florets on nice little spikes.

WHITE BUTTERFLY (200-Kunderd) Excellent white, a bit of cream in the throat. Opens 6 waved florets on a wiry spike.

WINTER CARNIVAL (107-Koerner) Cream-white, wide rosepink edge; one of the best faceups and very small.

YELLOW BIRD (210-Kuhn) Solid plain petaled yellow, opens up to 10 of its 20 buds. No large or medium.

300 SIZE

Prices unless noted, L- 2/25; M- 3/25; S- 5/25; bt. 25¢ pkg.

ATTICA (331-K&M) Pink with large cream blotches, red midlines. Perfect placement and facing, opens 7. L- 50; M- 35.

ABU HASSAN (378-Pfizer) Deep violet blue, opens 8-10; the leader for commercial use.

BROWN ORCHID (390-Van Voorhis) We wish this fine brown flower could stay classified; For us it's small enough to be a 290 and a too-small flower is penalized. We'd like to see it a 290 as it was, but nobody asked us! L- 20; M- 2/30; S- 3/30; bt. 35¢ pkg.

CRUSADER (301-Fischer) Snow white, lightly ruffled and blotched purple. No large. M- 2/30; S- 3/30.

GLENWOOD (362-Marek) Ruffled rose version of Wedgwood. No Large. M- 35; S- 25; bt.- 10/35.

GOLD CHEVRON (310-Beaton) Lacinated light yellow, no markings; opens 7 with 6 more in color.

INVITATION (342-Kadel) Pure pink with white throat, plain petals, opens 6. Grow this and win in the 340 class.

JOHN T. PIRIE (390-Kunderd) Bright brown, red blotch bordered yellow, 7 open; nothing else like it. L- 50; M- 35; S- 25; bt.- 10/50.

JULIET (365-Rupert) Deep rosered with white blotches pencilled rose-red. Opens 8 and leads its class. L- 50; M- 35; S- 25.

L'ESPERANCE (300-Pfizer) Pure white, ruffled. Fine performer, 7 open, 6 in color. Another 300 winner. L-20; M-2/30; S-3/30; bt-20/25.

MELODY (333-K&M) Deep bright salmon, scarlet blotches. Lightly ruffled, 6 open, perfect facing and placement. L- 50; M- 35.

OBERBAYERN (379-Pfizer) Deep blue, large white blotches, sharp contrast. Big seller but we think we have plenty this year.

OKLAHOMA (386-Wilson) Ruffled lavender-gray, buff throat mark.

- QUEEN CHARLOTTE (310-Dowling) Light yellow, rolled petals. This one opens up to 15, sometimes even more. Hybridizers' favorite.
- RED LACE (352-Kunderd) Lacinated solid red; for corsages and arranging as spike is not too long. A favorite.
- SCARLET TANAGER (336-Kleinhaus) Bright scarlet, plushy look, very rich. clarity of color not often seen in flowers. Beautifully ruffled. L- 35; M- 25; S- 2/35; bt.- 35¢ pkg.
- SENECA (362-Palmer) Very tall spikes with 8 open florets, nicely waved. Solid pastel rose, sometimes flecked darker at edges.
- SHOT (301-De Bruyn) Clear white slightly flushed rose; huge ruby blotch, 6 open. L- \$1.00; M- 75; S- 50.
- SPRITE (320-Palmer) Ruffled golden orange, called butterfly type. L- 2/30; M- 3/30; S- 3/20.
- THE ORCHID (366-Sprague) Lacinated light lavender, like orchids in both color and appearance.
- VARIATION (340-Kreuger) Solid pure pink, tall spikes with 8 open. Every spike cuttable.
- WEDGWOOD (366-Fischer) Heavily ruffled lavender, cream throat; unusually beautiful and delicately colored. Opens 5.

400 AND 500 SIZES

Prices unless noted, L- 2/25; M- 3/25; S- 5/25; bt.- 25¢ pkg.

- ALFRED NOBEL (445-Salman) Ruffled deep pink, white throat; tall and beautiful. Large and medium only.
- ALPINE (400-Palmer) Much-ruffled white, no foreign color, opens 10. An old one but still one of the loveliest.
- ANDRENA (460-Armstrong) Phlox pink, primrose throat, 6 open. This is distinctive, not "just another pink".
- ARC DE TRIOMPHE (410-De Bruyn) Light straw yellow, a good commercial as its performance is uniform. Opens 8.
- AVANTI (406-De Bruyn) Cream flushed lilac-pink, 7 open; very early. L- 50; M- 35; S- 25; bt.- 15/50;
- BARBARA ANN SCOTT (407-Sisson) Ruffled cream, some pink shading in throat. Small and bulblets only.
- BEAUTY'S BLUSH (440-Fischer) Blush pink, rolled petals, 8 open. This is a hardy perennial.
- BIRCH RED (552-Rich) Silky unmarked red, 8 open.
- BOCCHERINI (423-K&M) Early red-orange, cream throat marks; early and does not fade in sun.

- BOUTON D'OR (412-De Bruyn) Ruffled commercial yellow, 10 open.
- BUFF BEAUTY (516-De Bruyn) Rich pinky-buff blending to buff-yellow throat. Tall, 8-10 open. L- \$1.00; M- 75; S- 50; bt. 10/75.
- CARRARA (500-Baerman) Huge commercial white, always run out of these. Slight pencilling in throat.
- CHARLOTTE ANNE (490-Lins) Beautiful ruffled chocolate, a wanted color.
- CHRONIQUE (432-K&M) Solid deep salmon, rolled petals, opens 7. L- 60; M- 40.
- CIRCE (523-K&M) Large red-orange, cream throat darts; Large only.
- COVER GIRL (542-La Salle) Tall solid deep pink, round florets; 8-9 open on over-5-ft. spike.
- DAMARIS (470-B. Palmer) Lightly ruffled plum purple, opens 10 on a medium height plant.
- DAYBREAK (516-Harris) Tall pale buff, opens 7 or more. No large.
- DOLLY VARDEN (533-Harris) Deep salmon, pointed petals, cream throat. Opens 8. L- 2/30; M- 3/30; S- 3/20; bt. 35¢ pkg.
- DR. VAN DOBBERN DE BRUYN (500-Salman) Large pure white, throat has a greenish tinge when newly open.
- DUTCH MASTER (501-Salman) Lightly ruffled milk white, carmine feather in throat, 7 open.
- ELAN (530-De Bruyn) Satiny salmon pink without markings, 7 open. Very tall and lovely. L- 20; M- 2/30; S- 3/30; bt.- 15/20.
- ELMER'S ROSE (462-Fischer) Ruffled deep lavender-rose, 7 open.
- FANCY (430-De Bruyn) Soft pastel salmon, suede finish, throat a bit lighter, 8 open, 8 in color; formal. L- 75; M- 50; S- 30.
- FIAT LUX (410-K&M) Clear solid yellow, fine performer, 6-7 open. The name is Latin and meand, "Let There Be Light".
- FLYING FORTRESS (586-Wilson) Ruffled silver gray, rose midribs and throat mark. Opens 10 huge florets on a medium height plant. Not many L or M. L- 25; M- 20; S- 2/30; bt.- 35¢ pkg.
- FORSYTHIA (512-Harris) Chartreuse yellow buds open to clear yellow; upper petals have narrow edge of pink. 7 open. L- 25; M- 20.
- FRANCESCA (560-Toben) Beautifully ruffled lavender-pink, lighter in throat; has an ethereal look. L- 35; M- 25; S- 2/30; bt. 35¢ pkg.
- FRANCIS M. IRWIN (463-Wilson) Formal lavender-rose, darker throat mark. Opens 8.
- FRASER (432-Harris) Flame-salmon, unmarked. Tall, opens 7.

- FRIENDSHIP (442-Fischer) Richly ruffled pink, milk-white throat.
- GOLD (412-Marshall) Deep golden yellow, lightly ruffled.
- GOLD BANK (410-Bastian) Ruffled chartreuse-yellow, no foreign color, 8 open. L- 20; M- 2/30; S- 3/30; bt.- 35¢ pkg/
- GOLDEN ARROW (510-Pruitt) Fine light yellow, up to 10 open.
- GOLDEN DAWN (410-Savelief) Ruffled light yellow, opens up to 10, very tall, have seen it 5½ feet.
- GOOD MORNING (507-Lacey) Large ruffled cream, wide rose border and rose throat feather. Fast increase. L-\$1.25; M-75; S-50; bt.-10/\$1.
- GREEN LIGHT (406-Pfitzer) Ruffled green-white, the first glad to have a green tinge. Still sell out every year.
- HAN VAN MEEGEREN (412-De Bruyn) Deep yellow commercial, no markings. Large only.
- HARRY HOPKINS (464-Salman) Solid deep rose, tall spike, 8 open florets; good increaser.
- HEARTSEASE (470-Vawter) Ruffled bright fuchsia, no markings. Opens 9 on a medium height spike. L- 50; M- 35; S- 25; bt. 35¢ pkg.
- HEIRLOOM (566-Klein) Huge ruffled lavender, variable but a winner if it comes good. Exhibition variety.
- HOPMAN'S GLORY (412-Holland) Deep sunflower yellow, 7 open.
- ILLINI WHITE (400-Leuchtenberg) Beautifully formed tall ruffled pure white, 8 open. L- \$1.50; M- \$1.00; S- 75; bt.- 10/\$2.00.
- KING DAVID (570-Carlson) Purple velvet edged silver. Stretchy spikes hold 9 open florets.
- KITTYHAWK (466-Both) Lavender, deeper edges, opens 10.
- LEIF ERICSON (506-K&M) Tall sulphur-cream, waved florets, 9 open, always straight.
- LOUISE (468-Vawter) Deep heavily ruffled lavender, cream throat marking, heavy substance. Opens when cut in bud, 7 florets of 19 buds. Child of Myrna x Allegro, it is the parent of several fine lavenders and blues. L- 75; M- 50; S- 25; bt. 10/50; 100/\$4.00.
- MARIA GORETTI (500-Salman) Large plain petaled clear white, 7 open right down the row.
- MAUREEN GARDNER (501-Preyde) White blushed lavender, lavender brushing throat. Opens 10 lightly ruffled florets on tall spike.

MISS VERMONT (560-Hatch) Large ruffled light rose, opens 10.

MODERN TIMES (464-Salman) Dark rose with magenta glow; 7 open.

MOTHER FISCHER (400-Fischer) Tall ruffled wide-open white, 8 open.

MOUNT HOOD (401-De Bruyn) Satiny white, faint flesh shading, lemon throat. Sport of Skymaster. Opens 9. L- \$2.00; M- \$1.50.

MRS R.G. ERREY (554-Errey) Ruffled black-red, no markings; 8 open. Very tall.

NEW EUROPE (436-Europe) Light orange-scarlet, almost red-orange. 7-8 open on tall spike.

NEW YORK (564-Salman) Huge dark rosered, waved petals, good cutter. Opens 9.

ORCHID MARVEL (566-Jack) Large clear lavender, white midrib, 7 open.

ORIENTAL SPLENDOR (590-De Bruyn) See page 5 for description and prices.

OSTRICH FEATHERS (540-Pfitzer) A lacinated version of Picardy, the color being almost identical. Opens 7, always a sellout.

PACTOLUS (417-K&M) Golden buff with scarlet blotches, 10 open.

PALETTE (437-Kooy) Lightly ruffled scarlet, blotched purple. Unusual and a favorite; opens 7.

PAULINE (400-Wright) Pure white, up to 9 open on tall spike.

Good performer and propagator. L-25; M-2/25; S-3/25; bt.-35¢ pkg.

PEARL (401-Rupert) Pearl-white, throat mark of cream and rose; 7 open on formal spike. L- \$1.00; M- 75; S- 50; bt.- 10/\$1.00.

PRINCESS BEATRIX (425-De Bruyn) See page 5 for description and price.

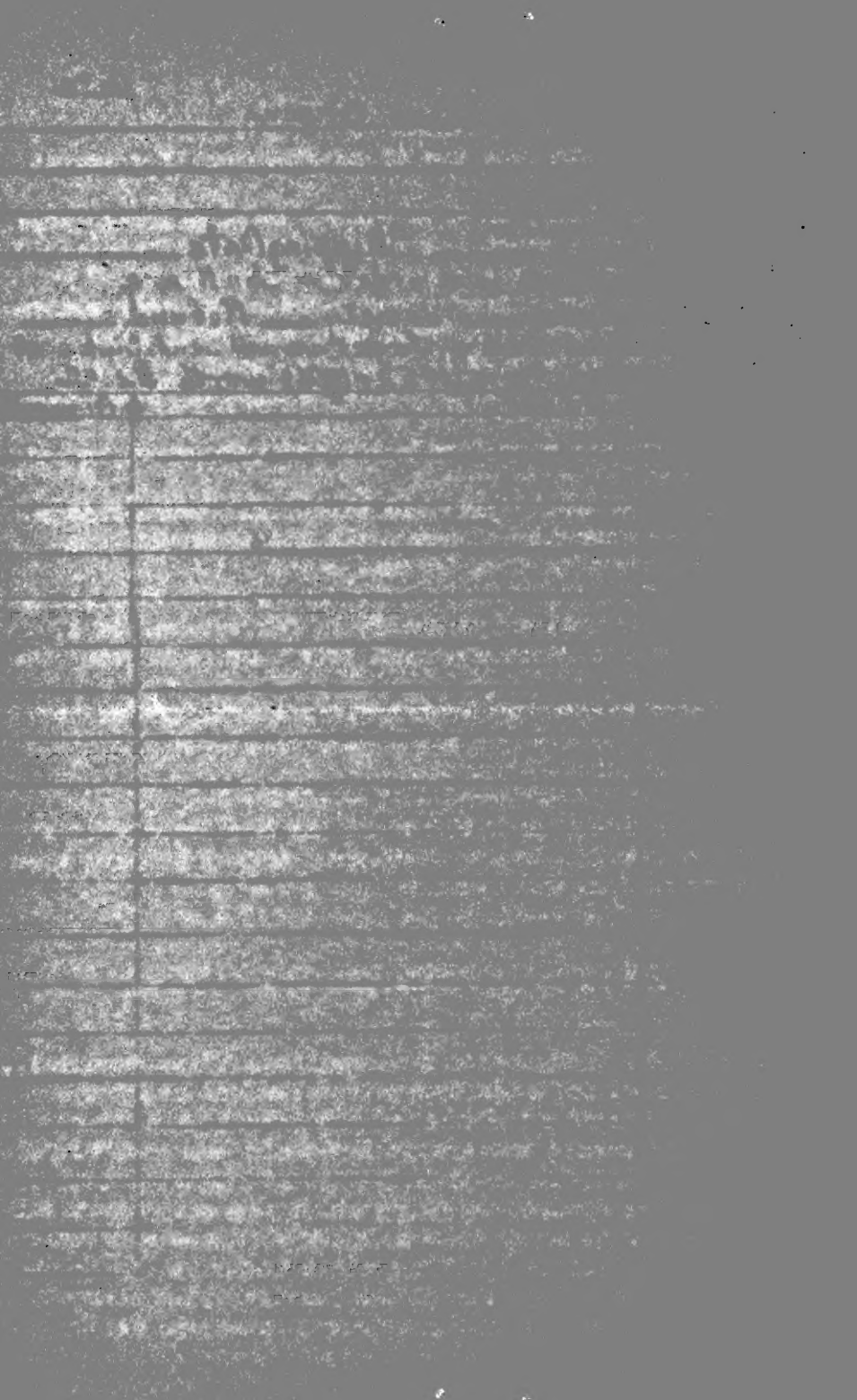
PRINCESS MARGARET (466-Burns) A two-tone lavender with petalbacks bright cyclamen purple and faces a soft suede lavender. Nothing else like it; opens 7. L- 20; M- 2/30.

QUEEN JULIANA (524-De Bruyn) Solid red-orange, fine and tall with 8 or more open. Winner of many awards. L- \$1; M- 75; S- 50.

RECOMPENSE (410-Pruitt) A red blotch lights its clear yellow florets; lightly ruffled. Tall, opens 8, a really fine one. L- 50; M- 35.

RED CHARM (436-Butt) The old standby red, still going strong. No L.

RED PEPPER (452-K&M) Solid poppy red, 7 well-attached florets open on a wiry stem. M- \$1.50; S- \$1.00; bt.- 10/\$1.50.



- RED WING (436-Wright) Bright vibrant scarlet, slight white throat lines, uniform performer; larger only.
- ROBERT ALAN (412-Lorenz) Tall clear golden yellow; 8 open. No L.
- ROSALIE (490-Burgess) Buff, shaded and blotched wine-red. Opens 7; Waved petals, very unusual.
- ROSEGLow (560-Klein) Large ruffled light rose, opens 8.
- SANS SOUCI (436-K&M) Glowing scarlet, white midlines on lower petals. Tall spike, fine placement.
- SINCERITY (407-Errey) Frilled cream, flame feather in throat; tall and opens up to 10.
- SPOTLIGHT (413-Palmer) Old favorite bright yellow with red blotches, rolled petals, 8 open.
- STAINED GLASS (470-Burns) Solid purple, almost translucent, reminding one of stained glass windows. Very beautiful.
- STRATHNAVER (500-Peattie) Huge snowy white, plain petals. When you see it with 9 or 10 7-inch florets open you'll understand why it's still winning blue ribbons.
- SWEET SIXTEEN (442-Fischer) True gingham pink with cream-white throat. Opens 8 florets with rolled petals.
- TIVOLI (442-K&M) Large pure pink, white throat, 8-9 open.
- UHU (482-K&M) Brown, speckled with red and throat marked red and yellow. Opens 9; no S.
- XLO (532-Mills & Fox) Dieppe sport, solid salmon with waved petals; opens 6. L- \$1.00; M- 75; S- 50; bt.- 10/75.

—***—

We have known many vicissitudes of weather, health and circumstance in our many years of growing glads: drou ght, flood, freezing, illness, beauty, rainbows of color and dreams come true. From it all we have evolved a sort of motto or aim for a life, and thought perhaps you might like to know it too. Here it is:

MY CREED

To waken anew with every spring,
 To grow in spirit with every summer,
 To know fulfillment with every autumn,
 To wait with patience each winter through.

Mirl Vawter.

We do not grow glads in mixture, but for those who would like to buy their glads unlabeled, we will furnish a mixture of many kinds, both listed and some we haven't enough of to include, at \$6.00 per hundred, sizes 1-3; no discards, we attend to that in the fall, but it may include recent introductions where we have a good supply. We guarantee satisfaction in this mixture. Fifty bulbs at the hundred rate. State whether sizes 300-500 or 100-200 are wanted.

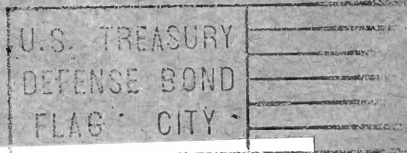
GROW GLADIOLUS

A Flower of Peace

For Beauty Satisfaction.



Timberland Gardens
Rt. 1, Box W-50,
Lebanon, Oregon
Return Postage Guaranteed



U. S. DEPARTMENT OF AGRICULTURE
LIBRARY
WASHINGTON 25, D. C.

OFFICIAL BUSINESS
PRINTED MATTER

PENALTY FOR PRIVATE USE TO AVOID
PAYMENT OF POSTAGE, \$300
(GPO)

Library, U. S. Dept. of Agriculture,
WASHINGTON 25, D. C.